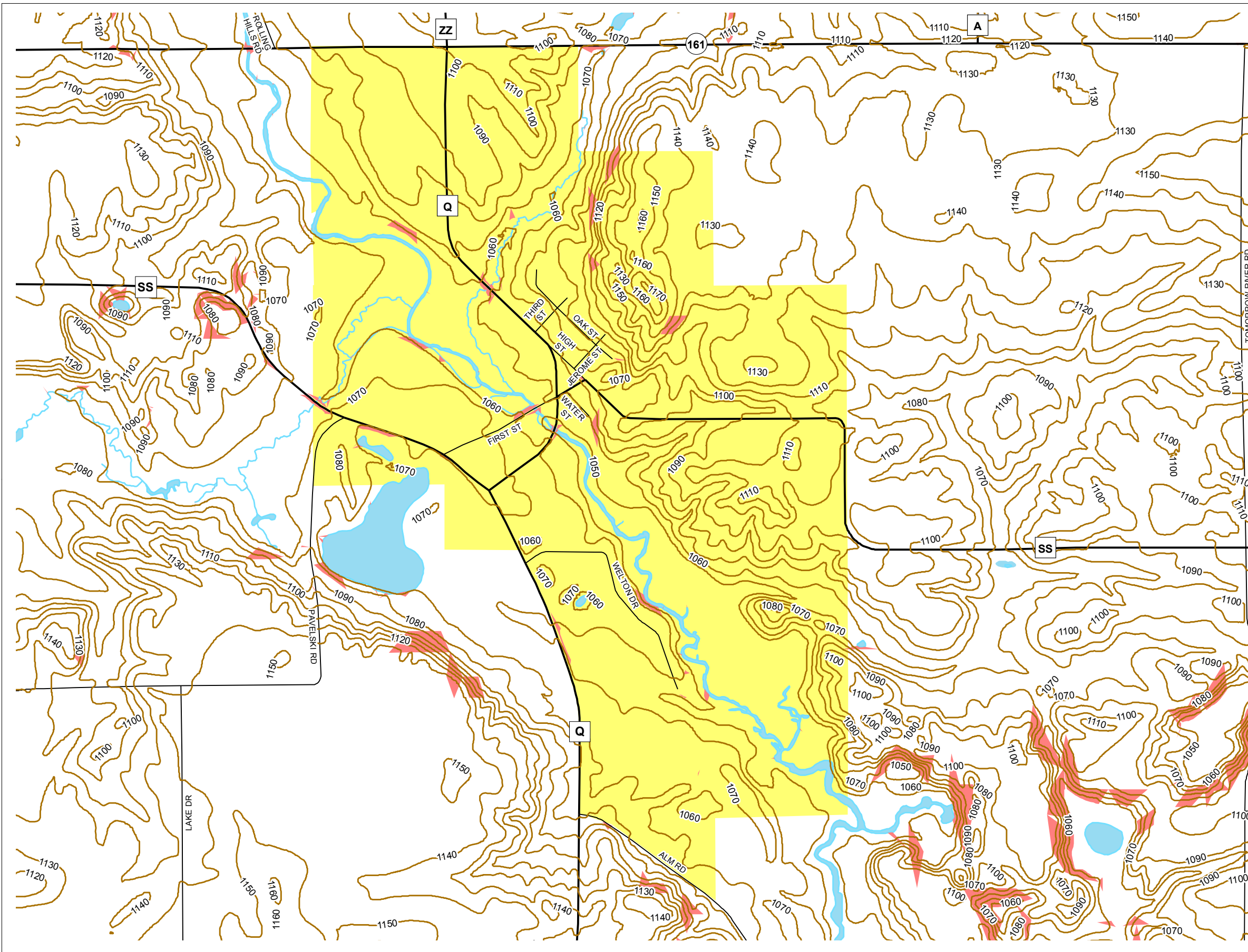
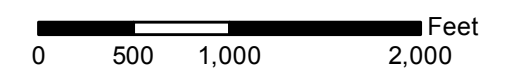


Map 5.1 Topography



Elevation (Ft.)
 — Elevation (Ft.)
 ■ Steep Slope (> 12%)



Source: U.S Geological Survey (2016)
 Portage County Planning and Zoning (2017)
 Village Board Adopted: December 12, 2017

Village of Nelsonville Comprehensive Plan



Portage County
 Planning & Zoning
 1462 Strongs Ave.
 Stevens Point, WI 54481